

LED Navigation Lights

Signal Mate, LLC

Government, Commercial & Recreational Marine Vessels up to 164 feet
Certified ABYC-A16, COLREGS '72

Combination Tri-Color with Anchor LED Navigation Light

Electrical Specifications

Light Source	Light Emitting Diode (LED)
Volts	9 to 30 VDC
Amps	0.300 Amps @ 12v
Reverse Polarity	Diode
Surge Protection	TVS Diode, 1500 watts
EMI Noise	Active Noise Reduction
Visibility	2NM

Mechanical Specifications

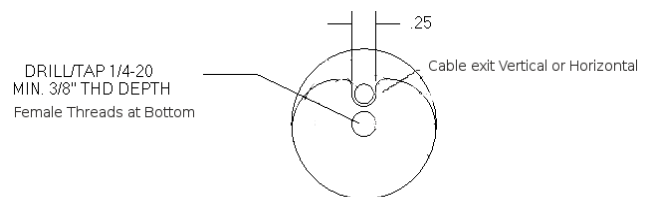
Color	Black
Fixture Heat Sink	Hard Coated Aluminum
Lens	Polycarbonate
Wire Type	UV, Conductor 20AWG
Wire Length	2.5 feet
Cable Exit	Horizontal or Vertical
Weight	11 oz
Height	4.5 inches
Diameter	1.5 inches
Durability	Waterproof, Vibration Proof

Mounting Options

Light Bottom	1/4 * 20 Female Threads
Optional	360 Degree Bracket
Optional	3/4 or 1" Pole Mount

The specifications above are for the combination Tri-Color with Anchor navigation light.

Built for and used by USCG and other Military vessels since 2004.



1/4 * 20 Female Threads on Bottom for Mounting

50,000 hours of continuous use
Waterproof / Submersible
Easy Installation
Made in the USA